

LEGALIZATION OF VIDEO POKER IN ILLINOIS

IMPACT ON SLOTS AND TABLE GAMES

CENTER FOR GAMING RESEARCH, DECEMBER 2014

This report explores the impact of the 2012 legalization of video poker in Illinois.

We examine the performance of table games and slot machines in the periods before, during, and after video poker’s legalization. We also compare video poker directly against table games and slots as a percentage of total gaming win.

Data from Louisiana, where video poker has been legal since the 1990s, is featured as a baseline for comparison. The historical performance of video poker, riverboat casinos, land-based casinos, and slots at the track is included in this report.

While casino slot machine revenue in Illinois has remained relatively stable since 2010, revenue from video poker and table games has trended upward. This may explain the decline in total adjusted gross revenue share for slot machines since January 2010.

Compared to Illinois, slot machine win share in Louisiana is much more stable. This may be due to the relative maturity of the video poker market in Louisiana. As the market for video poker in Illinois matures, it may follow a similar pattern. Thus, an eventual decline in video poker growth will likely stabilize slot machine win share in Illinois.

Contents

Notes and Definitions.....	2
Louisiana Definitions.....	2
Illinois Definitions.....	2
Preferred citation:.....	2
Louisiana Gross Revenues: Video Poker, Riverboat, Land-based, and Track	3
Louisiana Video Poker Revenue as a Percentage of Total Revenue	6
Illinois Revenues: Video Poker, Total Revenue, and Total Gaming Win	7
Illinois Gross Revenues: Tables and Slots.....	8
Illinois NTI as a Percentage of Gaming Win	10
Illinois Electronic Gaming Revenue as a Percentage of Adjusted Gross Revenue	10
Illinois Table Game Adjusted Gross Revenue.....	11
Illinois Gaming Revenue Breakdown	11
Conclusions	12

Notes and Definitions

All data taken from: Illinois Gaming Board monthly riverboat reports (riverboat and video gaming)

<http://www.igb.illinois.gov/RiverboatReports.aspx>

Louisiana Gaming Control Board revenue reports (land-based casinos, riverboat, slots at the track, and video poker)

<http://www.igb.illinois.gov/VideoReports.aspx>

Louisiana Definitions

L AGR: Land-based casino adjusted gross revenue

R AGR: Riverboat adjusted gross revenue

T AGR: Slots at the track adjusted gross revenue

VP AGR: Video poker adjusted gross revenue

Illinois Definitions

EGD%: Slot machine revenue as a percentage of total AGR

Electronic Gaming Device (EGD): Slot machine

NTI: Net Terminal Revenue (video poker) **NTI%:** Net terminal revenue as a percentage of total state gaming win (video poker + casino)

TGW: Total casino plus NTI monthly revenue

Total AGR: Total casino gaming win

Preferred citation:

Courtney Nickson. *Legalization of Video Poker in Illinois, 2012*. Las Vegas: Center for Gaming Research, University Libraries, University of Nevada Las Vegas, 2014.

Questions? Contact the Center for Gaming Research at (702) 895-2234 or special.collections@unlv.edu

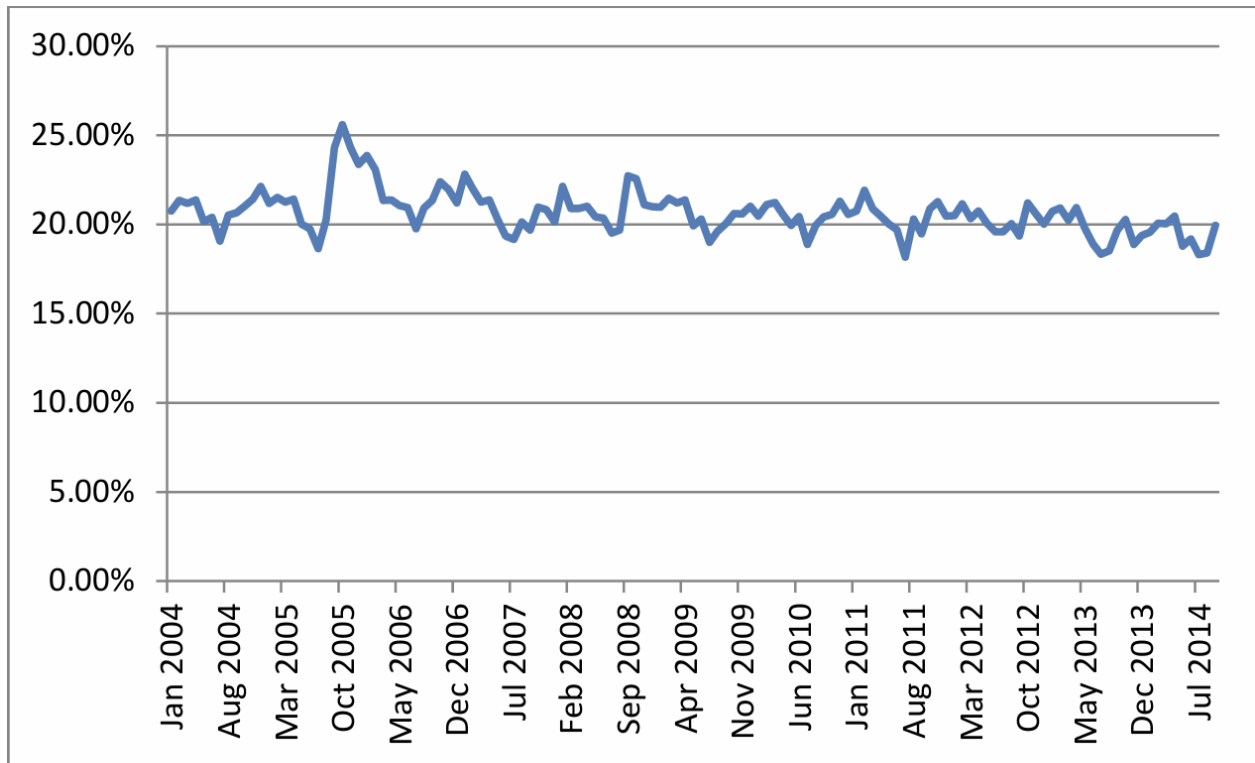
Louisiana Gross Revenues: Video Poker, Riverboat, Land-based, and Track

Month	VP AGR	R AGR	L GGR	T AGR	Tot. Revenue	VP NDR%
Jan 2004	\$47,911,675	\$135,233,251	\$25,755,442	\$22,010,056	\$230,910,424	20.75%
Feb 2004	\$51,500,213	\$140,145,605	\$26,669,999	\$22,912,115	\$241,227,932	21.35%
Mar 2004	\$50,316,323	\$137,456,941	\$27,605,627	\$22,121,844	\$237,500,735	21.19%
Apr 2004	\$48,017,778	\$129,888,199	\$26,035,098	\$20,680,080	\$224,621,155	21.38%
May 2004	\$47,293,730	\$132,786,762	\$27,778,136	\$26,803,134	\$234,661,762	20.15%
Jun 2004	\$45,104,125	\$127,354,243	\$25,102,808	\$23,595,564	\$221,156,740	20.39%
Jul 2004	\$47,269,455	\$145,257,438	\$28,931,775	\$26,368,847	\$247,827,515	19.07%
Aug 2004	\$44,872,336	\$123,588,966	\$26,834,570	\$23,362,186	\$218,658,058	20.52%
Sep 2004	\$43,472,236	\$119,947,252	\$25,403,759	\$21,567,604	\$210,390,851	20.66%
Oct 2004	\$47,582,730	\$126,685,724	\$28,634,257	\$23,623,413	\$226,526,124	21.01%
Nov 2004	\$45,518,228	\$118,979,294	\$25,337,420	\$22,752,734	\$212,587,676	21.41%
Dec 2004	\$49,973,949	\$124,738,922	\$25,897,767	\$25,171,804	\$225,782,442	22.13%
Jan 2005	\$49,599,577	\$129,902,779	\$27,561,541	\$27,051,564	\$234,115,461	21.19%
Feb 2005	\$52,127,220	\$134,471,600	\$27,424,120	\$28,182,712	\$242,205,652	21.52%
Mar 2005	\$53,579,058	\$136,808,747	\$32,301,744	\$29,484,854	\$252,174,403	21.25%
Apr 2005	\$51,588,120	\$128,974,833	\$30,595,093	\$29,803,255	\$240,961,301	21.41%
May 2005	\$49,956,425	\$136,733,068	\$33,045,814	\$29,852,229	\$249,587,536	20.02%
Jun 2005	\$48,291,401	\$141,159,003	\$27,201,601	\$27,739,316	\$244,391,321	19.76%
Jul 2005	\$49,908,880	\$157,496,753	\$29,463,600	\$30,735,307	\$267,604,540	18.65%
Aug 2005	\$45,006,967	\$127,523,417	\$24,745,608	\$24,961,888	\$222,237,880	20.25%
Sep 2005	\$38,370,381	\$97,043,348	\$0	\$22,442,234	\$157,855,963	24.31%
Oct 2005	\$59,077,103	\$152,928,277	\$0	\$18,861,572	\$230,866,952	25.59%
Nov 2005	\$59,178,999	\$157,373,788	\$0	\$27,000,797	\$243,553,584	24.30%
Dec 2005	\$63,420,032	\$177,276,006	\$0	\$30,669,027	\$271,365,065	23.37%
Jan 2006	\$63,794,157	\$169,307,727	\$0	\$34,350,851	\$267,452,735	23.85%
Feb 2006	\$64,418,489	\$168,852,347	\$13,811,473	\$32,075,666	\$279,157,975	23.08%
Mar 2006	\$64,922,852	\$171,551,554	\$33,894,182	\$33,668,568	\$304,037,156	21.35%
Apr 2006	\$58,174,168	\$151,234,284	\$31,511,123	\$31,203,077	\$272,122,652	21.38%
May 2006	\$58,779,857	\$152,137,898	\$35,732,045	\$32,338,410	\$278,988,210	21.07%
Jun 2006	\$56,643,575	\$153,203,532	\$29,188,359	\$31,270,502	\$270,305,968	20.96%
Jul 2006	\$55,799,751	\$161,906,723	\$31,597,717	\$33,041,745	\$282,345,936	19.76%
Aug 2006	\$55,388,421	\$147,091,684	\$32,728,890	\$29,654,691	\$264,863,686	20.91%
Sep 2006	\$56,747,146	\$145,887,697	\$33,020,658	\$30,184,136	\$265,839,637	21.35%
Oct 2006	\$56,043,852	\$135,869,201	\$30,684,006	\$27,806,320	\$250,403,379	22.38%
Nov 2006	\$56,195,323	\$138,294,250	\$32,626,972	\$28,717,466	\$255,834,011	21.97%
Dec 2006	\$60,013,086	\$158,286,911	\$33,633,129	\$31,051,439	\$282,984,565	21.21%
Jan 2007	\$58,186,423	\$136,147,370	\$31,971,227	\$28,796,852	\$255,101,872	22.81%
Feb 2007	\$59,774,748	\$150,779,067	\$30,230,154	\$31,353,242	\$272,137,211	21.96%
Mar 2007	\$62,097,387	\$159,144,208	\$37,350,864	\$33,755,005	\$292,347,464	21.24%
Apr 2007	\$55,748,303	\$142,201,927	\$32,344,742	\$30,427,903	\$260,722,875	21.38%
May 2007	\$56,052,143	\$150,048,523	\$39,577,812	\$30,885,221	\$276,563,699	20.27%
Jun 2007	\$52,679,345	\$156,307,382	\$33,104,579	\$30,216,622	\$272,307,928	19.35%
Jul 2007	\$54,131,294	\$161,328,689	\$35,190,000	\$31,793,984	\$282,443,967	19.17%

Month	VP AGR	R AGR	L GGR	T AGR	Tot. Revenue	VP NDR%
Aug 2007	\$53,735,183	\$148,122,706	\$35,325,384	\$29,651,420	\$266,834,693	20.14%
Sep 2007	\$51,656,252	\$145,633,802	\$35,212,524	\$29,877,480	\$262,380,058	19.69%
Oct 2007	\$52,743,457	\$137,243,037	\$32,447,088	\$28,972,340	\$251,405,922	20.98%
Nov 2007	\$53,363,602	\$140,141,558	\$32,550,183	\$30,074,265	\$256,129,608	20.83%
Dec 2007	\$57,490,293	\$157,738,395	\$36,747,771	\$33,577,962	\$285,554,421	20.13%
Jan 2008	\$56,774,299	\$136,660,239	\$31,892,354	\$31,150,005	\$256,476,897	22.14%
Feb 2008	\$61,819,051	\$161,159,966	\$37,710,912	\$35,160,801	\$295,850,730	20.90%
Mar 2008	\$60,697,876	\$157,195,282	\$37,426,870	\$35,042,305	\$290,362,333	20.90%
Apr 2008	\$56,662,868	\$146,784,137	\$34,729,237	\$31,563,332	\$269,739,574	21.01%
May 2008	\$60,328,431	\$161,704,841	\$38,214,121	\$35,293,832	\$295,541,225	20.41%
Jun 2008	\$54,727,997	\$150,296,126	\$31,637,739	\$32,217,516	\$268,879,378	20.35%
Jul 2008	\$56,322,004	\$164,760,130	\$32,511,734	\$34,788,940	\$288,382,808	19.53%
Aug 2008	\$53,381,094	\$153,956,222	\$30,482,802	\$33,282,800	\$271,102,918	19.69%
Sep 2008	\$47,869,372	\$116,095,873	\$23,193,880	\$23,549,145	\$210,708,270	22.72%
Oct 2008	\$60,534,618	\$144,152,386	\$30,331,289	\$33,226,754	\$268,245,047	22.57%
Nov 2008	\$57,487,012	\$149,029,145	\$30,887,603	\$34,957,155	\$272,360,915	21.11%
Dec 2008	\$59,189,444	\$152,725,339	\$34,895,596	\$35,167,594	\$281,977,973	20.99%
Jan 2009	\$58,927,949	\$153,232,256	\$31,332,919	\$37,638,896	\$281,132,020	20.96%
Feb 2009	\$60,673,385	\$153,386,402	\$31,390,827	\$37,211,464	\$282,662,078	21.46%
Mar 2009	\$58,646,287	\$150,075,800	\$32,048,100	\$35,933,145	\$276,703,332	21.19%
Apr 2009	\$55,065,335	\$139,650,830	\$29,450,652	\$33,508,147	\$257,674,964	21.37%
May 2009	\$55,893,828	\$152,516,046	\$34,033,106	\$38,073,385	\$280,516,365	19.93%
Jun 2009	\$49,295,127	\$134,333,623	\$26,897,029	\$32,154,640	\$242,680,419	20.31%
Jul 2009	\$51,678,968	\$154,644,945	\$29,535,970	\$36,076,914	\$271,936,797	19.00%
Aug 2009	\$48,711,195	\$138,959,778	\$28,087,039	\$32,660,990	\$248,419,002	19.61%
Sep 2009	\$47,124,517	\$132,126,985	\$25,434,395	\$30,576,663	\$235,262,560	20.03%
Oct 2009	\$50,175,254	\$132,125,837	\$30,673,557	\$30,457,276	\$243,431,924	20.61%
Nov 2009	\$46,359,681	\$122,794,135	\$27,889,998	\$28,262,697	\$225,306,511	20.58%
Dec- 2009	\$51,170,289	\$131,281,584	\$30,970,955	\$30,099,006	\$243,521,834	21.01%
Jan 2010	\$48,840,873	\$131,236,279	\$26,981,839	\$31,477,820	\$238,536,811	20.48%
Feb 2010	\$55,892,595	\$145,031,546	\$29,241,723	\$34,475,469	\$264,641,333	21.12%
Mar 2010	\$55,665,537	\$142,443,925	\$29,646,280	\$34,441,312	\$262,197,054	21.23%
Apr 2010	\$51,943,349	\$135,726,343	\$31,976,969	\$32,840,679	\$252,487,340	20.57%
May 2010	\$50,701,455	\$137,742,453	\$30,818,224	\$35,048,238	\$254,310,370	19.94%
Jun 2010	\$47,479,699	\$128,754,089	\$25,476,112	\$30,420,206	\$232,130,106	20.45%
Jul 2010	\$51,073,013	\$152,004,182	\$31,803,943	\$35,610,245	\$270,491,383	18.88%
Aug 2010	\$48,199,863	\$134,702,227	\$26,608,473	\$32,065,434	\$241,575,997	19.95%
Sep 2010	\$47,675,287	\$127,736,944	\$27,611,462	\$30,443,557	\$233,467,250	20.42%
Oct 2010	\$50,936,219	\$135,665,483	\$29,644,959	\$31,350,048	\$247,596,709	20.57%
Nov 2010	\$48,852,835	\$124,301,288	\$27,765,884	\$28,548,856	\$229,468,863	21.29%
Dec 2010	\$52,871,384	\$140,918,365	\$32,179,802	\$31,188,871	\$257,158,422	20.56%
Jan 2011	\$50,095,517	\$132,867,506	\$26,353,567	\$32,041,683	\$241,358,273	20.76%
Feb 2011	\$55,994,723	\$138,399,920	\$28,048,215	\$33,013,352	\$255,456,210	21.92%
Mar 2011	\$56,837,854	\$146,384,305	\$33,665,160	\$35,336,062	\$272,223,381	20.88%
Apr 2011	\$52,098,626	\$139,644,432	\$29,299,259	\$33,549,105	\$254,591,422	20.46%

Month	VP AGR	R AGR	L GGR	T AGR	Tot. Revenue	VP NDR%
May 2011	\$50,810,289	\$138,289,572	\$30,532,470	\$34,336,256	\$253,968,587	20.01%
Jun 2011	\$48,434,711	\$137,384,167	\$27,368,548	\$32,482,742	\$245,670,168	19.72%
Jul 2011	\$49,839,212	\$158,981,190	\$27,438,205	\$37,936,263	\$274,194,870	18.18%
Aug 2011	\$47,305,190	\$129,833,298	\$24,648,187	\$31,139,325	\$232,926,000	20.31%
Sep 2011	\$47,534,502	\$134,102,768	\$30,761,612	\$31,702,380	\$244,101,262	19.47%
Oct 2011	\$47,869,698	\$123,531,945	\$27,007,045	\$30,911,685	\$229,320,373	20.87%
Nov 2011	\$47,353,448	\$124,602,950	\$20,980,748	\$29,750,222	\$222,687,368	21.26%
Dec 2011	\$51,972,290	\$138,567,136	\$32,118,047	\$31,235,011	\$253,892,484	20.47%
Jan 2012	\$47,801,051	\$126,350,113	\$26,962,106	\$32,250,943	\$233,364,213	20.48%
Feb 2012	\$58,325,750	\$151,040,918	\$28,911,670	\$37,242,339	\$275,520,677	21.17%
Mar 2012	\$58,150,280	\$154,099,295	\$35,755,891	\$38,024,290	\$286,029,756	20.33%
Apr 2012	\$50,174,814	\$131,456,284	\$26,838,327	\$33,198,314	\$241,667,739	20.76%
May 2012	\$51,280,500	\$141,487,183	\$28,454,539	\$34,212,602	\$255,434,824	20.08%
Jun 2012	\$49,401,289	\$139,917,495	\$28,155,778	\$34,715,309	\$252,189,871	19.59%
Jul 2012	\$48,138,159	\$138,646,980	\$23,907,519	\$35,017,972	\$245,710,630	19.59%
Aug 2012	\$47,119,209	\$132,689,584	\$22,930,304	\$32,398,149	\$235,137,246	20.04%
Sep 2012	\$47,921,655	\$141,799,760	\$25,248,720	\$32,743,677	\$247,713,812	19.35%
Oct 2012	\$49,731,807	\$126,008,300	\$28,490,907	\$30,362,252	\$234,593,266	21.20%
Nov 2012	\$50,018,147	\$132,698,229	\$28,534,645	\$31,719,940	\$242,970,961	20.59%
Dec 2012	\$52,942,987	\$143,520,015	\$34,685,815	\$33,192,998	\$264,341,815	20.03%
Jan 2013	\$48,461,768	\$126,856,303	\$27,009,209	\$31,328,909	\$233,656,189	20.74%
Feb 2013	\$54,644,103	\$139,677,820	\$31,725,017	\$35,227,942	\$261,274,882	20.91%
Mar 2013	\$58,896,121	\$161,329,155	\$31,588,280	\$39,249,280	\$291,062,836	20.23%
Apr 2013	\$52,018,085	\$137,886,095	\$25,801,196	\$32,699,224	\$248,404,600	20.94%
May 2013	\$52,874,106	\$149,126,865	\$29,799,247	\$35,255,459	\$267,055,677	19.80%
Jun 2013	\$47,168,820	\$142,379,549	\$27,128,219	\$32,861,338	\$249,537,926	18.90%
Jul 2013	\$47,692,741	\$153,584,131	\$25,350,462	\$33,668,488	\$260,295,822	18.32%
Aug 2013	\$48,868,111	\$153,725,702	\$27,881,192	\$33,520,269	\$263,995,274	18.51%
Sep 2013	\$44,617,299	\$128,260,745	\$23,857,960	\$30,102,695	\$226,838,699	19.67%
Oct 2013	\$47,617,935	\$132,271,000	\$25,938,473	\$29,115,292	\$234,942,700	20.27%
Nov 2013	\$48,088,188	\$144,143,475	\$31,039,629	\$31,355,154	\$254,626,446	18.89%
Dec 2013	\$48,562,066	\$143,086,726	\$28,497,981	\$30,571,668	\$250,718,441	19.37%
Jan 2014	\$45,840,168	\$131,498,917	\$26,806,315	\$30,165,992	\$234,311,392	19.56%
Feb 2014	\$52,662,861	\$142,551,892	\$32,765,995	\$34,422,869	\$262,403,617	20.07%
Mar 2014	\$56,197,332	\$154,418,481	\$32,607,271	\$37,041,420	\$280,264,504	20.05%
Apr 2014	\$50,115,060	\$137,309,908	\$26,660,838	\$30,862,115	\$244,947,921	20.46%
May 2014	\$49,446,647	\$150,320,779	\$28,808,900	\$34,734,715	\$263,311,041	18.78%
Jun 2014	\$48,322,746	\$142,365,154	\$29,927,133	\$31,177,866	\$251,792,899	19.19%
Jul 2014	\$47,728,042	\$151,569,963	\$28,502,826	\$32,914,608	\$260,715,439	18.31%
Aug 2014	\$49,134,575	\$156,700,716	\$27,203,002	\$33,878,556	\$266,916,849	18.41%
Sep 2014	\$45,567,856	\$129,611,084	\$24,037,906	\$29,122,241	\$228,339,087	19.96%

Louisiana Video Poker Revenue as a Percentage of Total Revenue



Illinois Revenues: Video Poker, Total Revenue, and Total Gaming Win

Month	NTI	Total AGR	TGW	NTI%
Sep 2012	\$90,054	\$137,692,000	\$137,782,054	0.07%
Oct 2012	\$1,388,400	\$128,567,000	\$129,955,400	1.07%
Nov 2012	\$3,829,324	\$124,028,000	\$127,857,324	2.99%
Dec 2012	\$6,994,483	\$132,108,000	\$139,102,483	5.03%
Jan 2013	\$9,796,851	\$123,141,042	\$132,937,893	7.37%
Feb 2013	\$13,578,457	\$124,350,414	\$137,928,871	9.84%
Mar 2013	\$18,790,234	\$149,058,307	\$167,848,541	11.19%
Apr 2013	\$20,294,594	\$134,503,216	\$154,797,810	13.11%
May 2013	\$23,077,382	\$137,732,198	\$160,809,580	14.35%
Jun 2013	\$23,241,029	\$131,399,243	\$154,640,272	15.03%
Jul 2013	\$25,572,836	\$132,116,950	\$157,689,786	16.22%
Aug 2013	\$29,119,918	\$135,152,660	\$164,272,578	17.73%
Sep 2013	\$29,622,666	\$125,458,406	\$155,081,072	19.10%
Oct 2013	\$33,984,082	\$123,008,498	\$156,992,580	21.65%
Nov 2013	\$36,008,857	\$120,740,848	\$156,749,705	22.97%
Dec 2013	\$37,637,399	\$114,649,988	\$152,287,387	24.71%
Jan 2014	\$38,432,324	\$106,475,829	\$144,908,153	26.52%
Feb 2014	\$44,070,253	\$115,296,557	\$159,366,810	27.65%
Mar 2014	\$53,369,680	\$138,489,748	\$191,859,428	27.82%
Apr 2014	\$52,309,541	\$127,378,960	\$179,688,501	29.11%
May 2014	\$54,551,321	\$129,356,168	\$183,907,489	29.66%
Jun 2014	\$50,775,438	\$117,269,041	\$168,044,479	30.22%
Jul 2014	\$55,594,241	\$124,847,334	\$180,441,575	30.81%
Aug 2014	\$59,075,332	\$128,010,687	\$187,086,019	31.58%
Sep 2014	\$57,489,764	\$118,131,120	\$175,620,884	32.74%

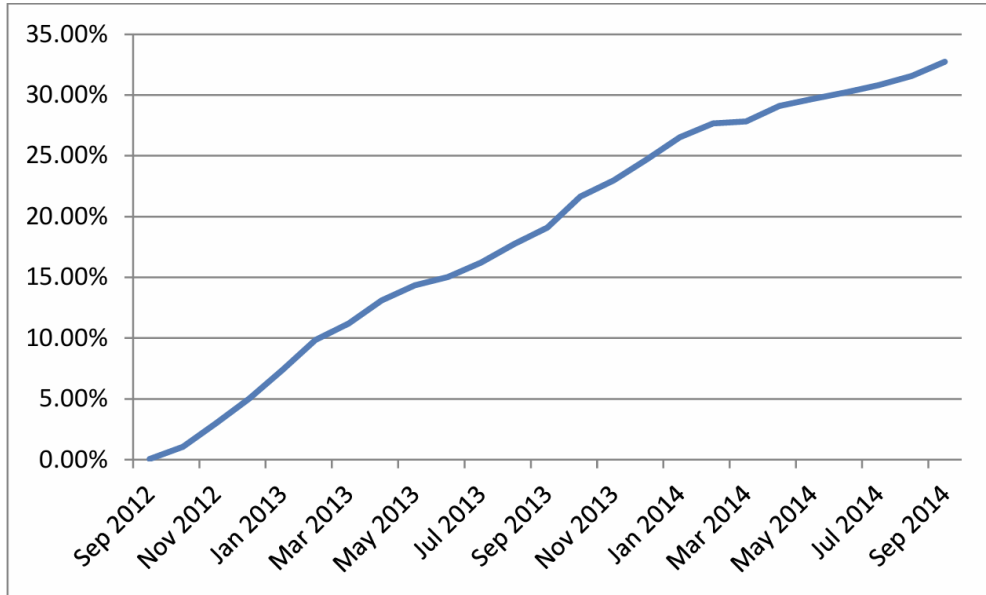
Illinois Gross Revenues: Tables and Slots

Month	Table AGR	EGDs	EGD AGR	Total AGR	EGD AGR/ Total AGR
Jan 2010	\$14,376,000	\$10,331	\$101,137,000	\$115,513,000	87.55%
Feb 2010	\$13,445,000	\$10,335	\$100,754,000	\$114,199,000	88.23%
Mar 2010	\$17,162,000	\$10,342	\$108,605,000	\$125,766,000	86.35%
Apr 2010	\$14,338,000	\$10,313	\$103,783,000	\$118,121,000	87.86%
May 2010	\$14,667,000	\$10,316	\$106,613,000	\$121,280,000	87.91%
Jun 2010	\$13,120,000	\$10,320	\$96,114,000	\$109,234,000	87.99%
Jul 2010	\$14,306,000	\$10,315	\$106,221,000	\$120,526,000	88.13%
Aug 2010	\$14,959,000	\$10,320	\$100,327,000	\$115,286,000	87.02%
Sep 2010	\$12,334,000	\$10,262	\$96,500,000	\$108,834,000	88.67%
Oct 2010	\$14,790,000	\$10,227	\$100,931,000	\$115,721,000	87.22%
Nov 2010	\$13,664,000	\$10,238	\$90,777,000	\$104,441,000	86.92%
Dec 2010	\$14,385,000	\$10,257	\$87,632,000	\$102,017,000	85.90%
Jan 2011	\$14,311,000	\$10,327	\$96,079,000	\$110,390,000	87.04%
Feb 2011	\$14,776,000	\$10,324	\$93,470,000	\$108,246,000	86.35%
Mar 2011	\$13,808,000	\$10,062	\$107,845,000	\$121,653,000	88.65%
Apr 2011	\$15,551,000	\$10,053	\$104,783,000	\$120,334,000	87.08%
May 2011	\$11,647,000	\$9,306	\$98,501,000	\$110,148,000	89.43%
Jun 2011	\$15,748,000	\$10,278	\$95,821,000	\$111,569,000	85.88%
Jul 2011	\$15,778,000	\$11,310	\$118,239,000	\$134,017,000	88.23%
Aug 2011	\$20,192,000	\$11,256	\$116,362,000	\$136,554,000	85.21%
Sep 2011	\$19,274,000	\$11,256	\$110,816,000	\$130,089,000	85.18%
Oct 2011	\$19,979,000	\$11,276	\$112,014,000	\$131,992,000	84.86%
Nov 2011	\$21,527,000	\$11,293	\$106,284,000	\$127,812,000	83.16%
Dec 2011	\$23,108,000	\$11,292	\$111,689,000	\$134,797,000	82.86%
Jan 2012	\$20,510,000	\$11,282	\$106,468,000	\$126,978,000	83.85%
Feb 2012	\$24,726,000	\$11,286	\$120,279,000	\$145,005,000	82.95%
Mar 2012	\$21,616,000	\$11,284	\$124,991,000	\$146,607,000	85.26%
Apr 2012	\$23,199,000	\$11,301	\$119,200,000	\$142,399,000	83.71%
May 2012	\$21,509,000	\$11,246	\$116,298,000	\$137,807,000	84.39%
Jun 2012	\$29,886,000	\$11,385	\$115,330,000	\$145,216,000	79.42%
Jul 2012	\$24,284,000	\$11,271	\$118,429,000	\$142,713,000	82.98%
Aug 2012	\$11,808,000	\$11,287	\$117,240,000	\$129,049,000	90.85%
Sep 2012	\$25,147,000	\$11,299	\$112,545,000	\$137,692,000	81.74%
Oct 2012	\$18,284,000	\$11,313	\$110,283,000	\$128,567,000	85.78%
Nov 2012	\$18,240,000	\$11,298	\$105,788,000	\$124,028,000	85.29%
Dec 2012	\$22,603,000	\$11,298	\$109,505,000	\$132,108,000	82.89%
Jan 2013	\$21,579,066	\$11,312	\$101,561,977	\$123,141,042	82.48%
Feb 2013	\$21,967,852	\$11,309	\$102,382,562	\$124,350,414	82.33%
Mar 2013	\$25,776,184	\$11,311	\$123,282,123	\$149,058,307	82.71%

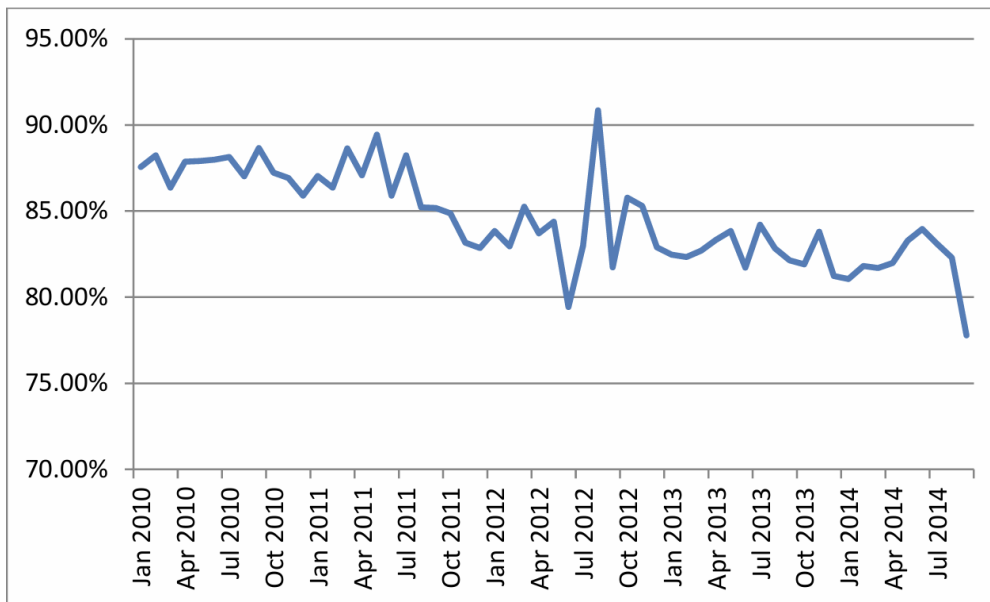
Month	Table AGR	EGDs	EGD AGR	Total AGR	EGD AGR/ Total AGR
Apr 2013	\$22,440,204	\$11,298	\$112,063,012	\$134,503,216	83.32%
May 2013	\$22,249,053	\$11,266	\$115,483,145	\$137,732,198	83.85%
Jun 2013	\$24,018,800	\$11,256	\$107,380,444	\$131,399,243	81.72%
Jul 2013	\$20,857,862	\$11,279	\$111,259,088	\$132,116,950	84.21%
Aug 2013	\$23,210,138	\$11,292	\$111,942,522	\$135,152,660	82.83%
Sep 2013	\$22,421,431	\$11,256	\$103,036,975	\$125,458,406	82.13%
Oct 2013	\$22,263,510	\$11,227	\$100,744,987	\$123,008,498	81.90%
Nov 2013	\$19,551,348	\$11,255	\$101,189,500	\$120,740,848	83.81%
Dec 2013	\$21,510,948	\$11,229	\$93,139,040	\$114,649,988	81.24%
Jan 2014	\$20,178,092	\$11,172	\$86,297,737	\$106,475,829	81.05%
Feb 2014	\$20,965,347	\$11,195	\$94,331,209	\$115,296,557	81.82%
Mar 2014	\$25,361,651	\$11,124	\$113,128,096	\$138,489,748	81.69%
Apr 2014	\$22,953,590	\$10,908	\$104,425,370	\$127,378,960	81.98%
May 2014	\$21,621,291	\$10,962	\$107,734,877	\$129,356,168	83.29%
Jun 2014	\$18,820,085	\$11,088	\$98,448,956	\$117,269,041	83.95%
Jul 2014	\$21,089,877	\$10,968	\$103,757,457	\$124,847,334	83.11%
Aug 2014	\$22,664,647	\$10,964	\$105,346,040	\$128,010,687	82.29%
Sep 2014	\$26,244,855	\$10,950	\$91,886,265	\$118,131,120	77.78%

Note: Table AGR, EGD AGR, and Total AGR from January 2010 to December 2012 were originally reported in thousands. These amounts have been multiplied by 1,000 in this report.

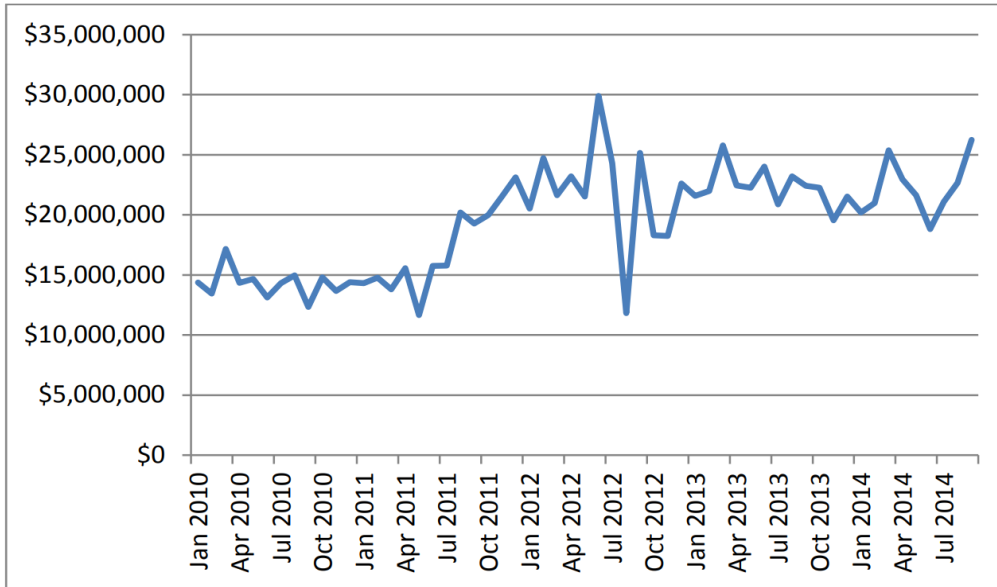
Illinois NTI as a Percentage of Gaming Win



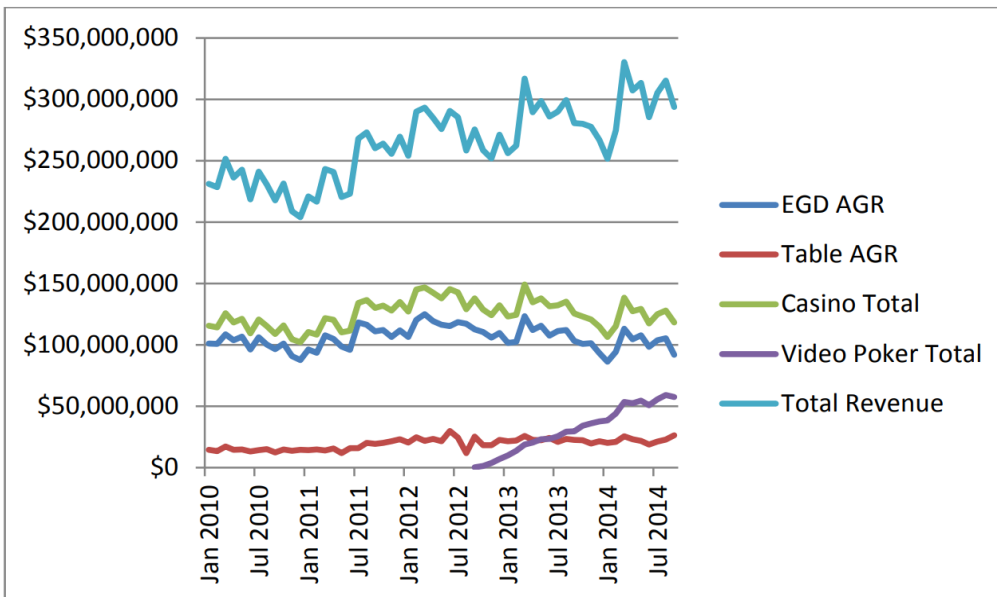
Illinois Electronic Gaming Revenue as a Percentage of Adjusted Gross Revenue



Illinois Table Game Adjusted Gross Revenue



Illinois Gaming Revenue Breakdown



Conclusions

Video poker growth is on the rise. From September 2013 to September 2014 alone, video poker's share of total gaming win increased by 71%. Since its peak in March 2013, casino win decreased by 20% through September 2014. Though slot machine win decreased by 25% from March 2013 to September 2014, table game revenues have remained steady with an increase of almost 2% within the same interval. As video poker growth stabilizes and reflects the Louisiana market, slot machine win may gain a greater percentage of total gaming win.